

DELIVERING VALUE-BASED HEALTHCARE IN THE NHS

Dr Sally Lewis

National Clinical Lead for Value-based and Prudent Healthcare

Honorary Professor, Swansea School of Medicine

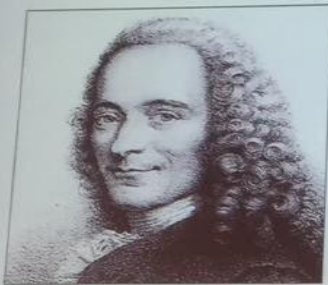
sally.lewis2@wales.nhs.uk

VALUE = OUTCOMES / COSTS

- ✓ Must be measured over a cycle of care,
- ✓ Total costs of care over the care cycle,
and
- ✓ Outcomes that matter for the patient's
condition over the care cycle.

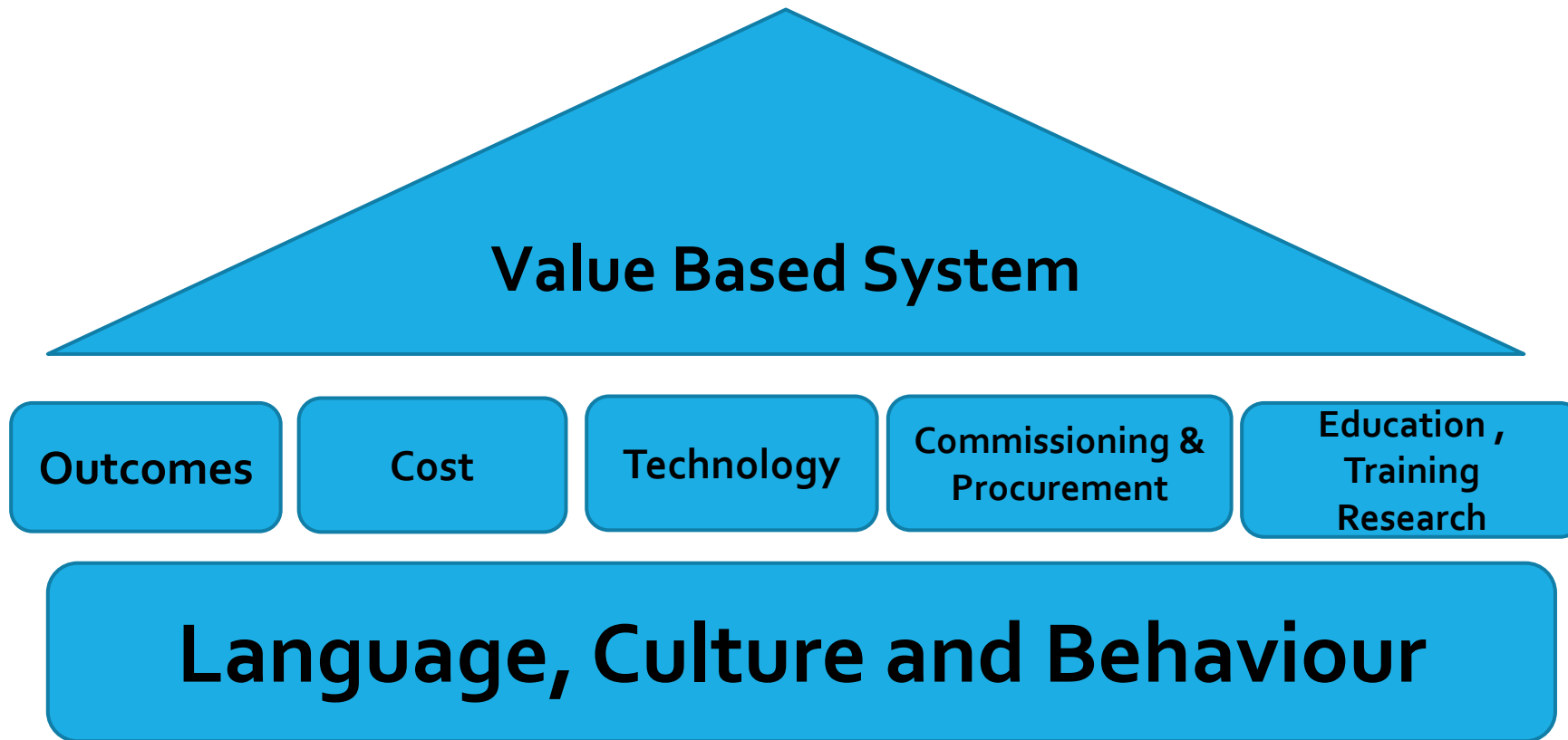
Redefining value... the NHS context

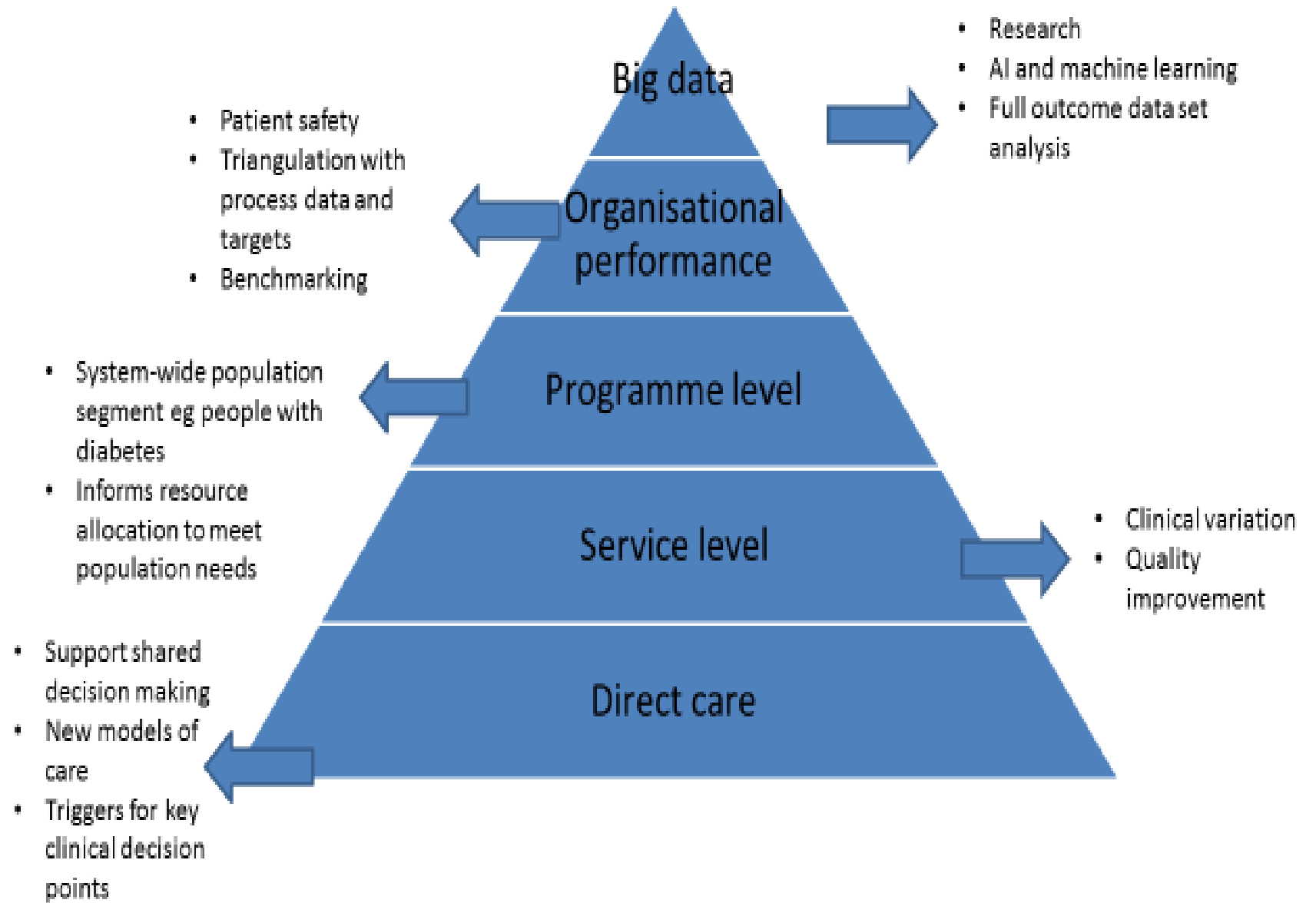
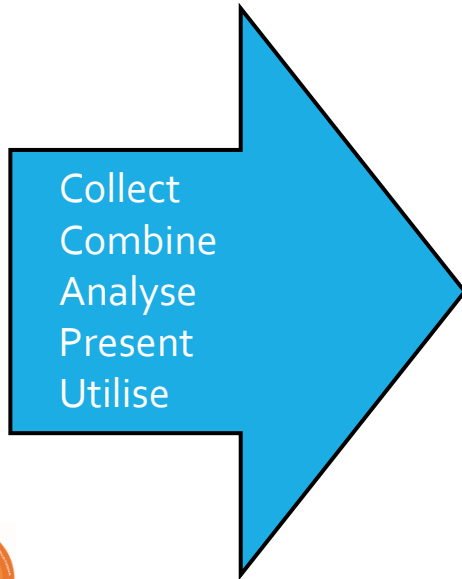
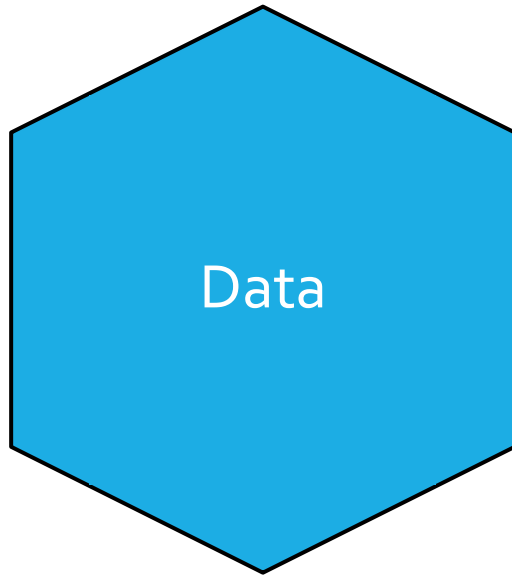
Voltaire (1694-1778)



'Doctors pour drugs of
which they know little,
to cure diseases of
which they know less,
into patients of whom
they know nothing'

Building the Foundations





The value-based aim in Wales

- Intelligent use of patient outcome data in direct care and in planning services
- Effective new approaches to supporting self-management (digital enablers and boosting health literacy)
- Intelligent use of data to drive resource allocation where it has maximum impact
- Optimum skill mix, generalist vs specialist



Thank you for listening

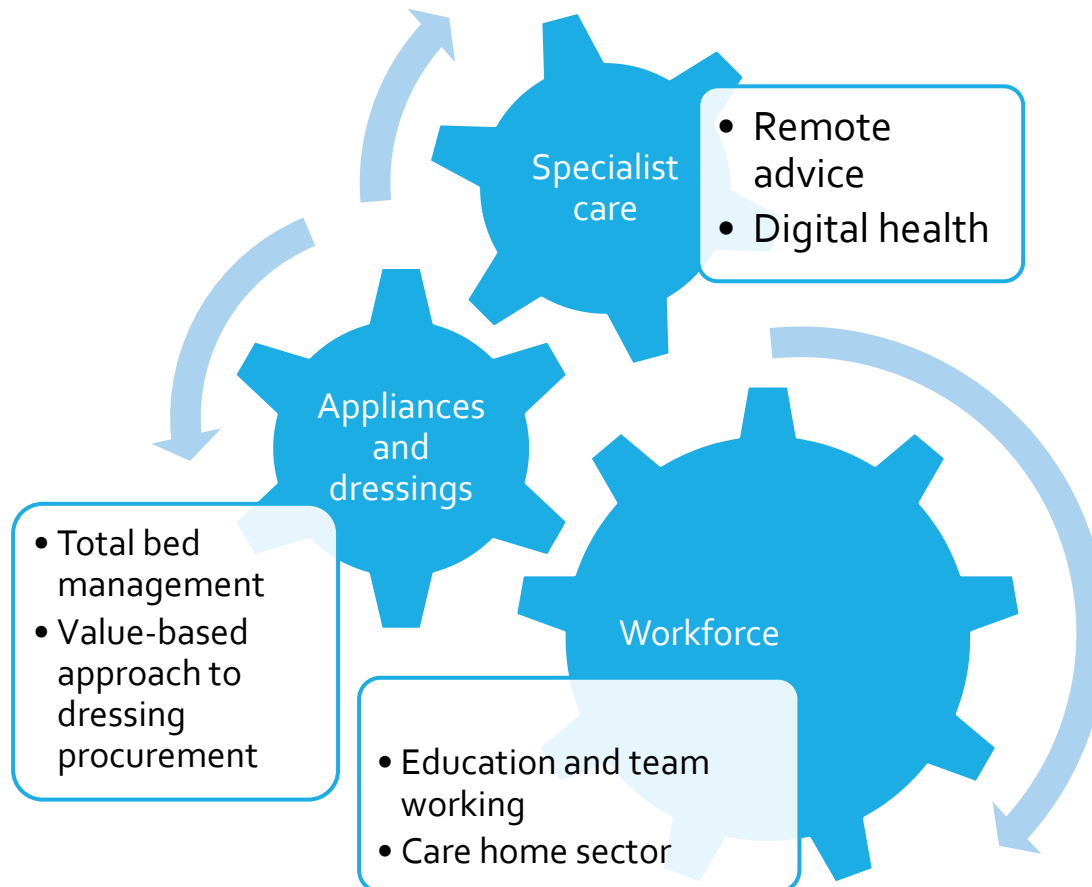
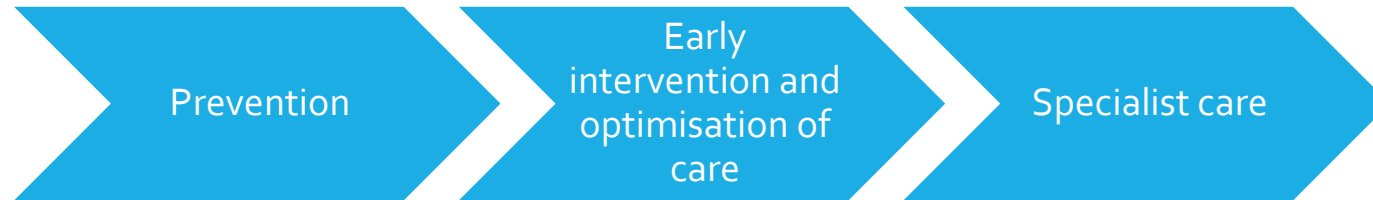
Examples to follow...

Dr Sally Lewis
sally.lewis2@wales.nhs.uk

Twitter: @RslewisSally



Value-based wound care – a system approach



Value for patients and healthcare system

Better outcomes, reduced costs through:

- Quicker healing
- Better function while healing
- Decreased healthcare utilisation
- Reduced harm and complications – bacteraemia admissions, surgical intervention

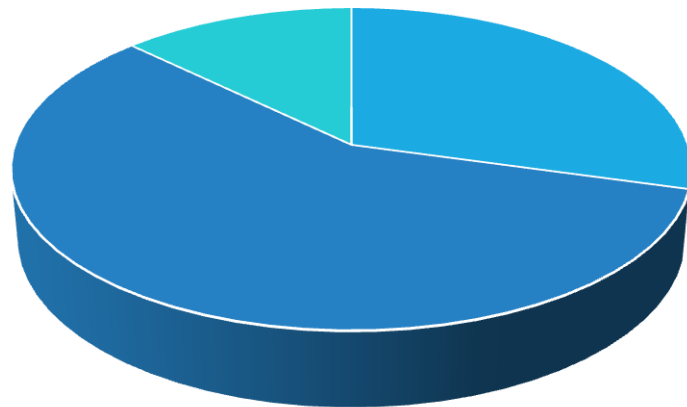
Public value

- Economic growth and job creation
- Innovation and research

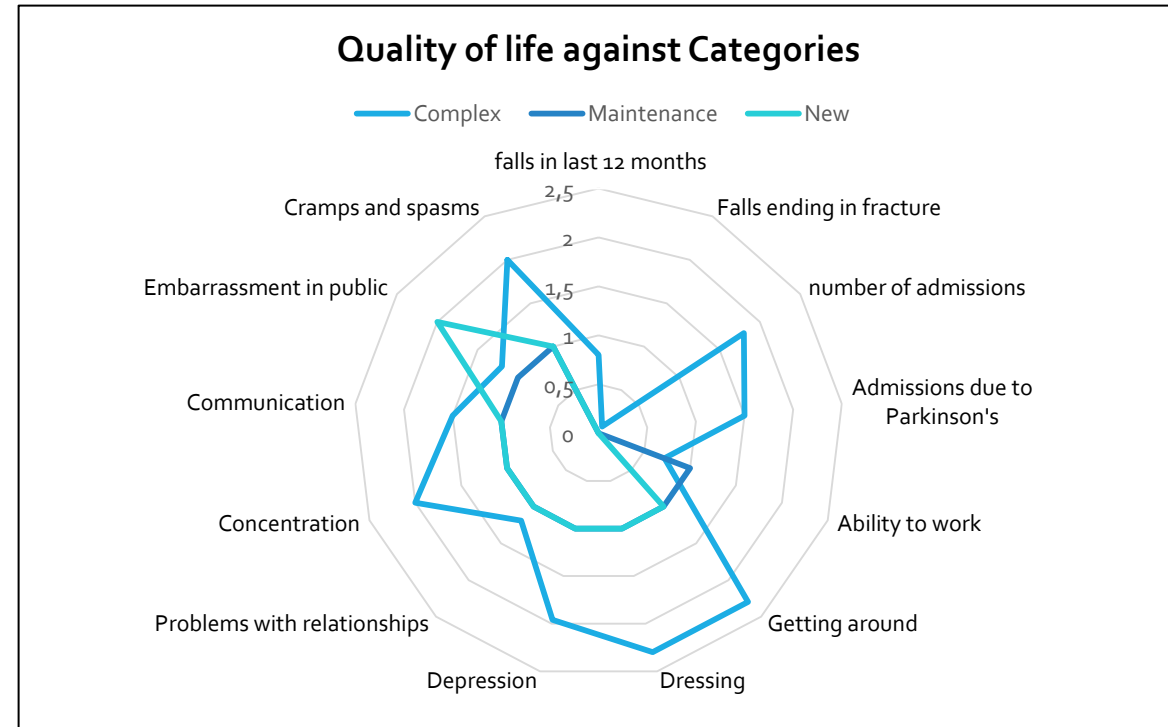
Parkinson's - Snap Shot of the data

April '16 - Nov '17 Patients visiting CNS Led Clinics across ABHB

	Count of crn
Complex	71
Maintenance	140
New	31
Grand Total	242



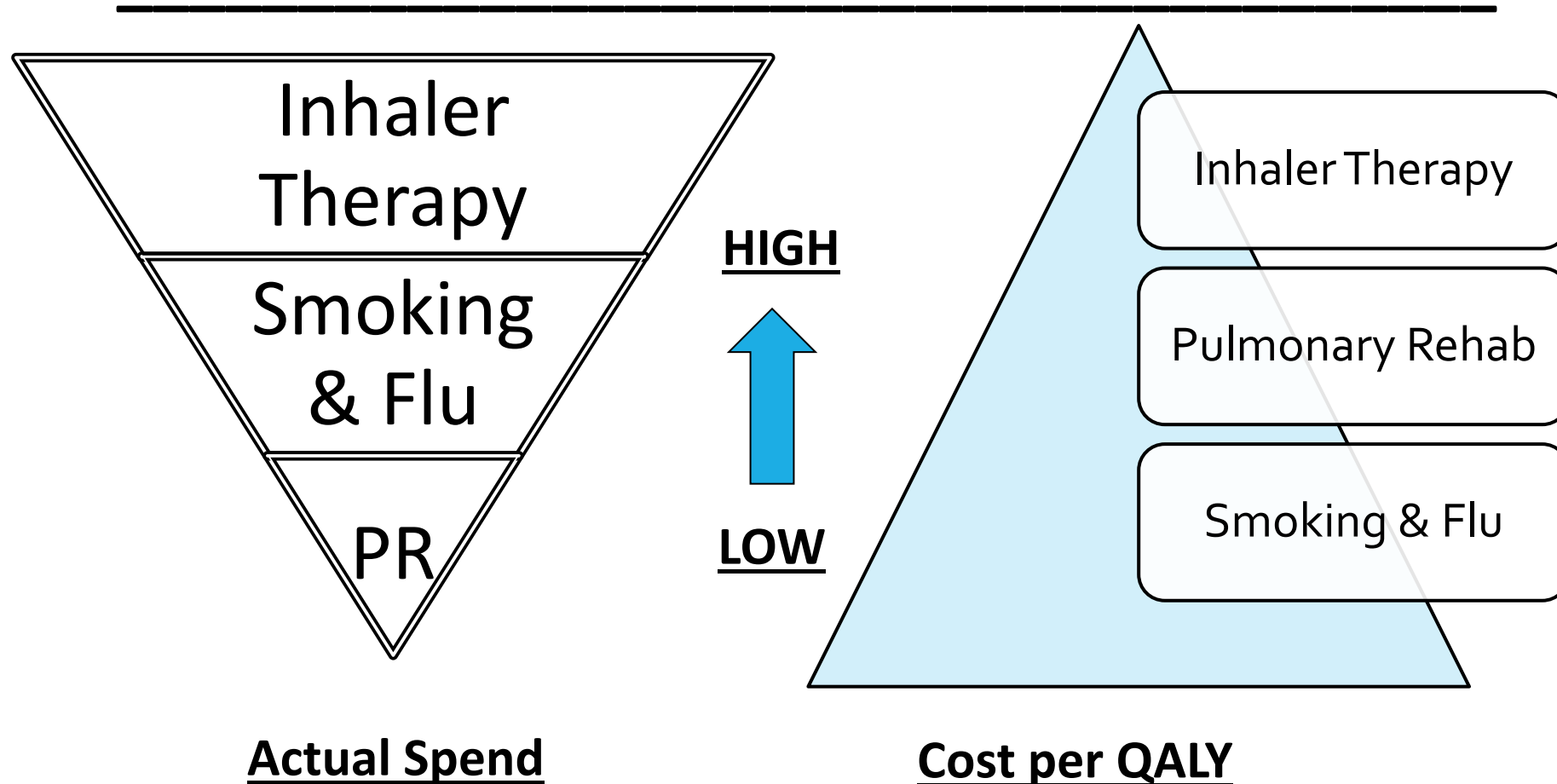
- Complex
- Maintenance
- New



Consider opportunities and next steps to:

1. Re-organise pathways and clinics
2. Needs assessment for that population
3. Track disease progression and treatment impact
4. Link with other data...can we begin to intervene earlier?

Reallocating resource for Value across a programme of care (COPD)



Examples in Action : OAK

*A novel community based education and shared decision making service
Approach designed to improve outcomes (knee pain, function, QOL) through
increased engagement in self-selected interventions.*

